



Paradigm Imaging Group

Distributor of Large Format Scanning & Printing Solutions

www.SCANtopia.com

State of the art scanning technology for
GIS/CAD, Graphics, Reprographics and more.

Graphtec CS610HD^{PLUS} 42" Full-Color Image Scanner

3 YEAR
ON-SITE
WARRANTY
CS610
Pro &
Base

Color & monochrome solutions for large-format scanning and copying featuring the world's fastest scanning speeds with unbeatable accuracy.

- 42" Wide
- 600dpi optical resolution, 9600dpi* max.
- ITA (Intelligent Thickness Adjustment) - accepts documents up to 0.8" thick
- CIS scanning technology - high definition scans, no folded optics & no warm-up time
- Scan speeds up to 9.0ips* (monochrome) & 3.0ips* (full-color) at 400dpi
- 0.1% scanning accuracy
- Scanning Master21+ software included
- USB 2.0 (high-speed) & Ethernet Plug 'n' Play connectivity
- 3 Year on-site warranty

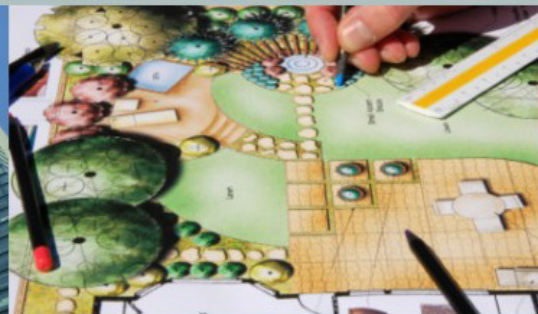


* PRO model, upgrade required.

42"

up to
9600dpi

Full Color



GRAPHTEC

CS610 HD^{PLUS}

Experience the Graphtec HD^{PLUS} Advantage!

CS610 Specifications

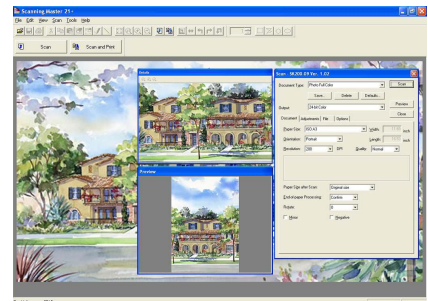
PRO

Base

Document sizes	ANSI E to ISO A4	
Maximum scanning medium width	1,092mm (43inches) (centered)	
Effective scanning area	1,066.8mm (42inches) (centered) Width & 999m (maximum) Length	
Document thickness	20.32mm (0.8inches) or less (including the carrier sheet)	
Document thickness detection process	Automatic detection by ITA	
Optical resolution	600 dpi	
Interpolated resolution	50 to 9600 dpi	50 to 800 dpi
Main scanning system	Contact image sensor system (five A4 sensors in a zigzag pattern)	
Sub scanning system	Document travel (sheet through) system	
Max. scanning speed @ 400dpi		
Monochrome	9.0 ips	4.5 ips
Color	3.0 ips	1.5 ips
Scanning precision	+/-0.1%	
Gradation	Monochrome : Bilevel, intermediate tones (dithering, error diffusion) Gray : 256 shades, Color: 8-bit, 24-bit	
Threshold value	Automatic threshold setting by DSP during monochrome mode	
Color space	s-RGB compatible	
Light source	LED (RGB)	
Interface	USB 2.0 (High speed), 10BASE-T/100BASE-TX	
Output	Image data	
Rated power supply	100 to 120/200 to 230 VAC +/-10%, 50/60 Hz	
Operating environment	Temperature: 10 deg.C to 35 deg.C; Humidity : 35% to 80% R.H. (non-condensing)	
Power consumption	135 VA or less (60W or less) (6.3W or less in power save mode)	
External dimensions (approx.)	1,205 x 957 x 717 mm (47.4 x 37.7 x 28.2 inches) (W x H x D) (including stand and basket)	
Weight (approx.)	47 kg / 84 lbs (including stand)	
Conforming standard	UL, FCC class A (USA), CE mark (EU), ccc, EK mark	
Operating system (OS)	Windows Vista, Windows XP Professional, Windows XP Home edition, Windows 2000 Professional	

Scan Master21+

Scanning Master 21+ Software enables all IS & CS series scanners to perform Scan-to-File, Scan-to-Print, or Scan-to-PDF document management tasks. It also allows users to integrate a large-format copying system by combining their scanner with a large-format printer.



Paradigm Imaging Group - Distributor of Large Format Scanning & Printing Solutions!

1590 Metro Drive, Suite 116, Costa Mesa, CA 92626 | 888.221.SCAN(7226) or 714.432.7226 in Canada

www.SCANtopia.com or info@paradigmimaging.com