



Paradigm Imaging Group

Distributor of Large Format Scanning & Printing Solutions

www.SCANTopia.com

State of the art scanning technology for
GIS/CAD, Graphics, Reprographics and more.

Graphtec IS210HD^{PLUS} 42" Image Scanner

3 YEAR
ON-SITE
WARRANTY
IS210
PRO^{LC}
PRO
Base

Color & monochrome solutions for large-format scanning and copying featuring the world's fastest scanning speeds with unbeatable accuracy.

- 42" Wide
- 600dpi optical resolution, 9600dpi* max.
- CIS scanning technology - high definition scans, no folded optics & no warm-up time
- Scan speeds up to 9.0ips* (monochrome) & 3.0ips* (8-bit color) at 400dpi
- 0.1% scanning accuracy
- Scanning Master21+ software included
- USB 2.0 (high-speed) & Ethernet Plug 'n' Play connectivity
- 3 Year on-site warranty



* PRO^{LC} model, upgrade required.

42"

up to
9600dpi

8-bit Color



GRAPHTEC

IS210 HD^{PLUS}

Experience the Graphtec HD^{PLUS} Advantage!

IS210 Specifications

PRO LC

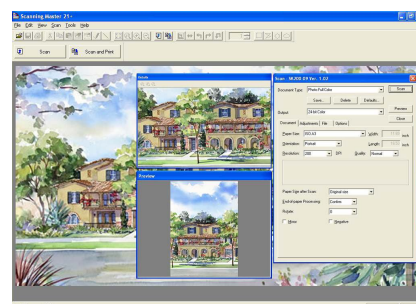
PRO

Base

Document sizes	ANSI E to ISO A4		
Maximum scanning medium width	1,092mm (43inches) (centered)		
Effective scanning area	1,066.8mm (42inches) (centered) Width & 999m (maximum) Length		
Document thickness	1.5mm (0.06 inches) or less (including the carrier sheet)		
Optical resolution	600 dpi		
Interpolated resolution	50 to 9600 dpi	50 to 9600 dpi	50 to 800 dpi
Main scanning system	Contact image sensor system (five A4 sensors in a zigzag pattern)		
Sub scanning system	Document travel (sheet through) system		
Max. scanning speed @ 400dpi			
Monochrome	9.0 ips	9 ips	4.5 ips
8-bit color	3.0 ips	—	—
Scanning precision	+/-0.1%		
Gradation	Monochrome : Bilevel, intermediate tones (dithering, error diffusion) Gray : 256 shades, Color: 8-bit Gray: 256 shades		
Threshold value	Automatic threshold setting by DSP during monochrome mode		
Color space	s-RGB compatible		
Light source	LED (RGB)		
Interface	USB 2.0 (High speed), 10BASE-T/100BASE-TX		
Output	Image data		
Rated power supply	100 to 120/200 to 230 VAC +/-10%, 50/60 Hz		
Operating environment	Temperature: 10 deg.C to 35 deg.C; Humidity : 35% to 80% R.H. (non-condensing)		
Power consumption	135 VA or less (60W or less) (5W or less in power save mode)		
External dimensions (approx.)	1,205 x 957 x 717 mm (47.4 x 37.7 x 28.2 inches) (W x H x D) (including stand and basket)		
Weight (approx.)	38 kg / 82 lbs (including stand)		
Conforming standard	UL, FCC class A (USA), CE mark (EU), ccc, EK mark		
Operating system (OS)	Windows Vista, Windows XP Professional, Windows XP Home edition, Windows 2000 Professional		

Scan Master21 +

Scanning Master 21 + Software enables all IS & CS series scanners to perform Scan-to-File, Scan-to-Print, or Scan-to-PDF document management tasks. It also allows users to integrate a large-format copying system by combining their scanner with a large-format printer.



Paradigm Imaging Group - Distributor of Large Format Scanning & Printing Solutions!

1590 Metro Drive, Suite 116, Costa Mesa, CA 92626 | 888.221.SCAN(7226) or 714.432.7226 in Canada

www.SCANtopia.com or info@paradigmimaging.com