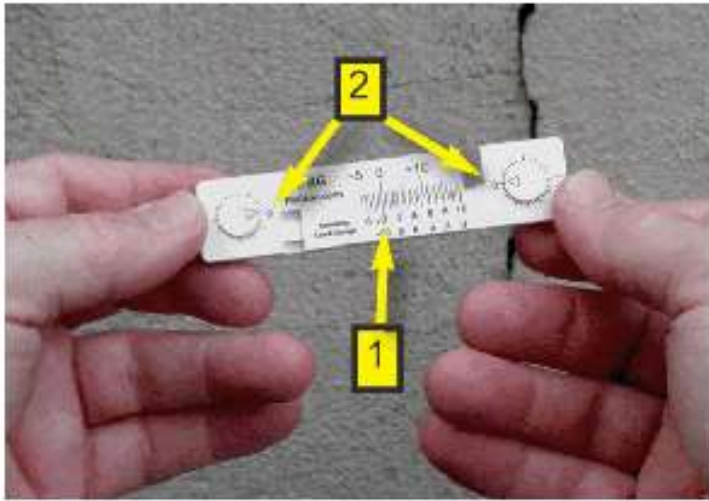


HOW TO INSTALL

PRG
www.PRGINC.com
800-774-7891



The monitor will need to be adjusted prior to installation.

1. Move the sliding bars until the zeros are aligned.
2. Move the rotating buttons until the triangle pointers line up with the zeros.



3. Extend the rotating buttons to the back of the monitor.
4. Apply the gaskets around the rotating buttons.
5. Apply a small amount of epoxy adhesive to the buttons.



6. Center the monitor over the crack. Push on the rotating buttons to adhere the epoxy to the surrounding surface.
7. Use tape to hold the monitor in place until the epoxy is set.



8. Remove tape.